

Specifications

| Models | Z-34/22 DC | | Z-34/22 Bi-Energy | |
|------------------------------------|------------|---------|-------------------|---------|
| Measurements | US | Metric | US | Metric |
| Working height maximum* | 40 ft 6 in | 12.52 m | 40 ft 6 in | 12.52 m |
| Platform height maximum | 34 ft 6 in | 10.52 m | 34 ft 6 in | 10.52 m |
| Horizontal reach maximum | 22 ft 3 in | 6.78 m | 22 ft 3 in | 6.78 m |
| Up and over clearance maximum | 15 ft | 4.57 m | 15 ft | 4.57 m |
| A Platform length | 2 ft 6 in | 0.76 m | 2 ft 6 in | 0.76 m |
| B Platform width | 4 ft 8 in | 1.42 m | 4 ft 8 in | 1.42 m |
| C Height - stowed | 6 ft 7 in | 2.00 m | 6 ft 7 in | 2.00 m |
| D Length - stowed | 18 ft 6 in | 5.64 m | 18 ft 6 in | 5.64 m |
| E Storage height | 7 ft 5 in | 2.26 m | 7 ft 5 in | 2.26 m |
| A Storage length | 13 ft 5 in | 4.08 m | 13 ft 5 in | 4.08 m |
| A Width | 5 ft 8 in | 1.73 m | 5 ft 8 in | 1.73 m |
| A Wheelbase | 6 ft 2 in | 1.88 m | 6 ft 2 in | 1.88 m |
| A Ground clearance - center | 6 in | 0.15 m | 6 in | 0.15 m |

Productivity

| | | | | |
|--------------------------|---------------------|----------|---------------------|----------|
| Lift capacity | 500 lbs | 227 kg | 500 lbs | 227 kg |
| Platform rotation | 180° | | 180° | |
| Vertical jib rotation | 139° | | 139° | |
| Turntable rotation | 355° non-continuous | | 355° non-continuous | |
| Turntable tailswing | zero | | zero | |
| Drive speed - stowed | 4.0 mph | 6.4 km/h | 4.0 mph | 6.4 km/h |
| Drive speed - raised** | .68 mph | 1.1 km/h | .68 mph | 1.1 km/h |
| Gradeability - stowed*** | 30% | | 30% | |
| Turning radius - inside | 5 ft 9 in | 1.75 m | 5 ft 9 in | 1.75 m |
| Turning radius - outside | 13 ft 1 in | 4 m | 13 ft 1 in | 4 m |
| Controls | 24V DC proportional | | 24V DC proportional | |
| Tires - air filled | 9 x 14.5 in | | 9 x 14.5 in | |

Power

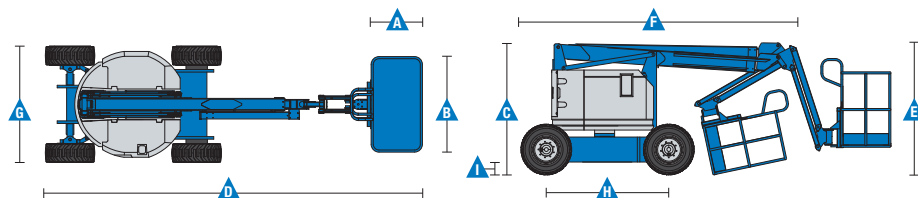
| | | |
|-------------------------|-------------------------------------------------|---------------------------------------------------------------------------------------------------------------------|
| Power Source | 48V DC (eight 6 V batteries 315 Ah capacity) | 48V DC (eight 6 V batteries 315 Ah capacity) with Tier IV Kubota 13.3 Hp (9.9 kw) diesel driven alternator |
| Auxiliary Power Unit | 24V DC | |
| Hydraulic Tank Capacity | 4 gal | 15.1 L |
| Fuel Tank Capacity | 9.3 gal | 35.2 L |

Weight****

| | | | | |
|--|------------|----------|------------|----------|
| | 11,000 lbs | 4,990 kg | 12,000 lbs | 5,443 kg |
|--|------------|----------|------------|----------|

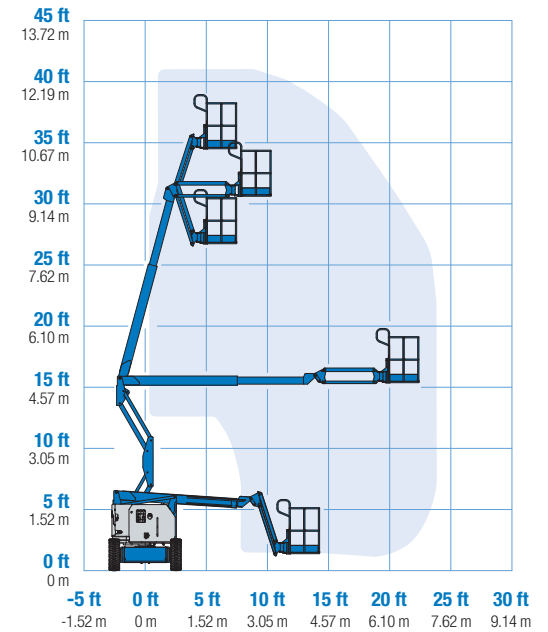
Standards Compliance

ANSI A92.5, CSA B354.4, EN 280, AS 1418.10



* The metric equivalent of working height adds 2 m to platform height. U.S. adds 6 ft to platform height.
 ** In lift mode *(platform raised), the machine is designed to operate on firm, level surfaces only.
 *** Gradeability applies to driving on slopes. See operator's manual for details regarding slope ratings.
 **** Weight will vary depending on options and/or country standards.

Range Of Motion Z-34/22 DC/Bi



Features

Standard Features

Measurements

- 40 ft 6 in (12.52 m) working height
- 22 ft 3 in (6.78 m) horizontal reach
- 15 ft (4.57 m) up and over clearance
- Up to 500 lbs (227 kg) lift capacity

Productivity

- 4 ft (1.22 m) jib boom with 139° working range
- Self-leveling platform
- Hydraulic platform rotation
- Fully proportional controls
- Thumb rocker steer
- Drive enable
- AC power to platform
- Horn
- Hour meter
- Tilt alarm
- Descent alarm
- 355° non-continuous turntable rotation
- Locking turntable covers (Bi-Energy only)
- Zero tailswing

Power

- 48V deep cycle battery pack
- 24V DC auxiliary power
- On board alternator powered by Tier IV Kubota 13.3 hp (9.9 kW) engine (Bi-energy model only)
- Battery charge indicator (BCI)*
- Universal 30A battery smart charger

Easily Configured To Meet Your Needs

Platform Options

- Steel 4 ft 8 in (1.42 m) (standard)
- Steel 3 ft 10 in (1.17 m)

Jib

- 4 ft (1.22 m) jib boom

Power

- 48V DC power source

Drive

- 2WD

Tire Options

- Industrial air-filled (standard ANSI/CSA)
- Industrial foam-filled (standard CE/AUS)
- Industrial non-marking air-filled
- Industrial non-marking foam-filled
- Sealant treated air-filled



Options & Accessories

Productivity Options

- Platform swing gate
- Half-mesh platform inserts with swing gate
- Platform top auxiliary rail
- Air line to platform
- Aircraft protection package*
- Fire resistant hydraulic oil
- Biodegradable hydraulic oil
- Hostile environment package
- Tool tray
- Fluorescent tube caddy
- Pipe cradle (pair)
- Flashing beacon
- Platform work lights
- Lockable platform control box cover

Power Options

- AGM batteries
- EE UL583 Fire Protection rating (DC models only)
- Battery charge indicator (BCI)**
- Low voltage interrupt with BCI
- Cold Weather Package (Bi-Energy only)
- 800 watt 120 V AC power inverter (DC only)

* Reduces platform weight capacity to 440 lbs
** Standard on Bi-Energy only.

Genie United States

18340 NE 76th Street
P.O. Box 97030
Redmond, Washington 98073-9730
Telephone +1 (425) 881-1800
Toll Free in USA/Canada +1 (800)-536-1800
Fax +1 (425) 883-3475

Genie Europe

The Maltings
Wharf Road
Grantham NG31 6BH
UK
Telephone +44 (0)1476 584333
Fax +44 (0)1476 584334
Email: AWP-InfoEurope@terex.com

Distributed By:

Effective Date: January, 2013. Product specifications and prices are subject to change without notice or obligation. The photographs and/or drawings in this document are for illustrative purposes only. Refer to the appropriate Operator's Manual for instructions on the proper use of this equipment. Failure to follow the appropriate Operator's Manual when using our equipment or to otherwise act irresponsibly may result in serious injury or death. The only warranty applicable to our equipment is the standard written warranty applicable to the particular product and sale and we make no other warranty, express or implied. Products and services listed may be trademarks, service marks or trade names of Terex Corporation and/or their subsidiaries in the USA and many other countries. Genie is a registered trademark of Terex South Dakota, Inc. © 2013 Terex Corporation.